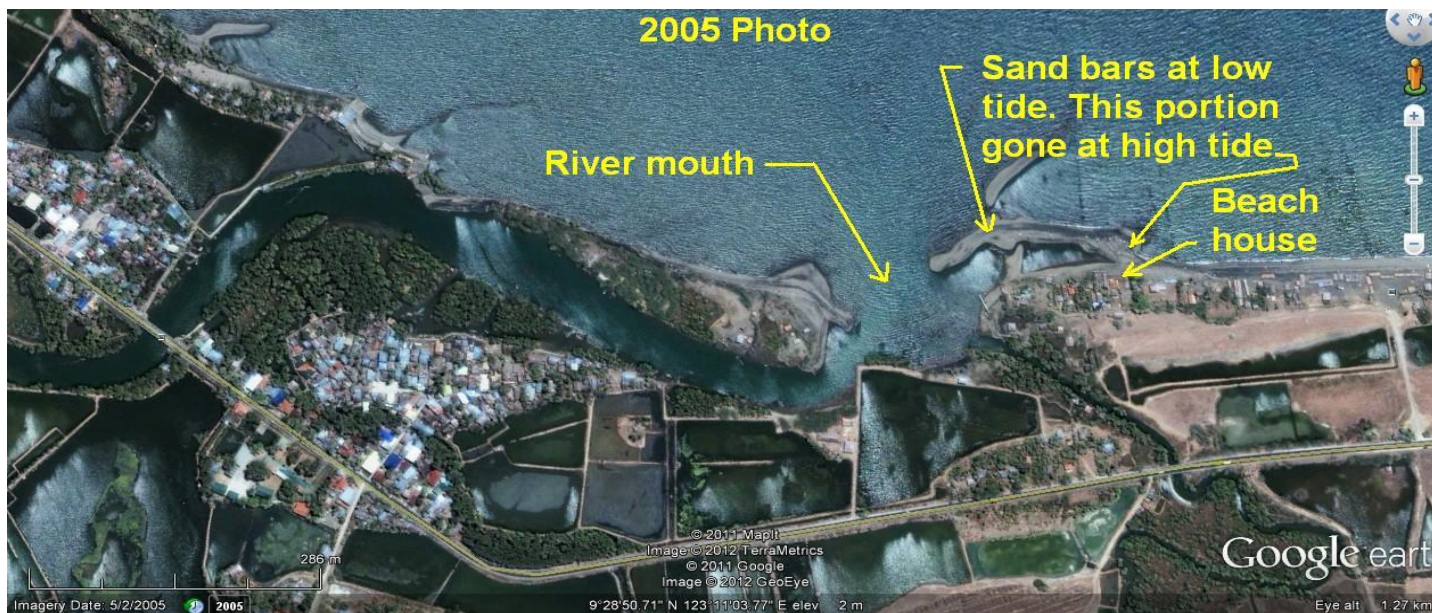


DEMISE OF A BEACH HOUSE



2005 view from new house. Note fence and sand bars further off.



2007 view from shore, with new trees in front yard and house behind.



2008 view of shore looking towards river mouth. Shoreline much closer.



Sandbagging fence line after it was washed away. Didn't help.



Sea assaulting 3rd fence we built. Other trees already washed away.



2012 view of house with foundations being eaten away by sea.